

Λεκάνη

Δευτέρα, 27 Αυγούστου 2012
6:29 πμ

Σημασία:

- Το πλησιέστερο οστών προς τα κάτω άκρα. Δεν αποτελεί άκρον αλλά μέρος του κορμού.
- Αναφέρεται εδώ διότι υπάρχει η εντολή "αγαπήσεις τον πλησίον σου"

Ετυμολογία:

•

Εγκυκλοπαιδικα

Φυλετικός διμορφισμός
Η γυναικεία λεκάνη διαφέρει της ανδρικής



The female pelvis is larger and broader than the male pelvis which is taller, narrower, and more compact.[33]

The female inlet is larger and oval in shape, while the male sacral promontory projects further (i.e. the male inlet is more heart-shaped).[33]

The sides of the male pelvis converge from the inlet to the outlet, whereas the sides of the female pelvis are wider apart.[34]

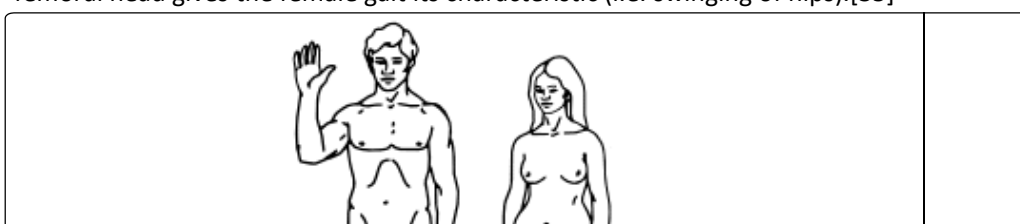
The angle between the inferior pubic rami is acute (70 degrees) in men, but obtuse (90-100 degrees) in women. Accordingly, the angle is called subpubic angle in men and pubic arch in women.[33] Additionally, the bones forming the angle/arch are more concave in females but straight in males.[34]

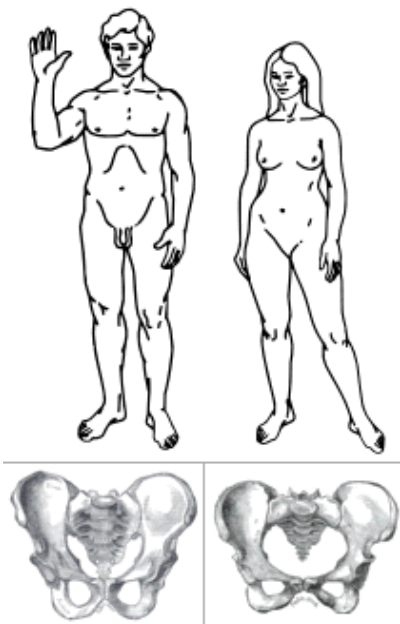
The distance between the ischia bones is small in males, making the outlet narrow, but large in females, who have a relatively large outlet. The ischial spines and tuberosities are heavier and project farther into the pelvic cavity in males. The greater sciatic notch is wider in females.[34]

The iliac crests are higher and more pronounced in males, making the male false pelvis deeper and more narrow than in females.[34]

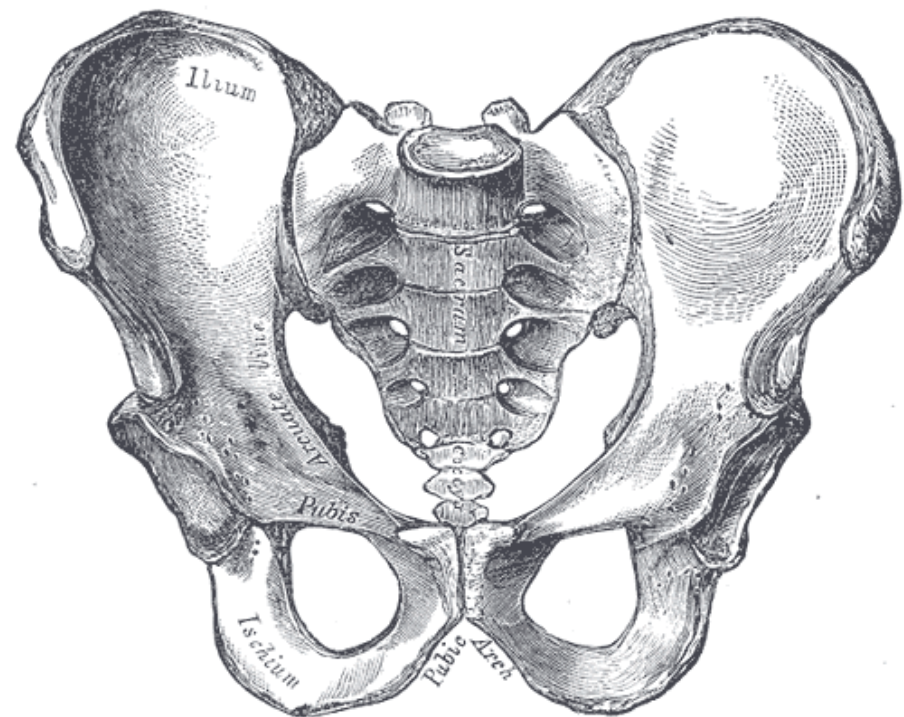
The male sacrum is long, narrow, more straight, and has a pronounced sacral promontory. The female sacrum is shorter, wider, more curved posteriorly, and has a less pronounced promontory.[34]

The acetabula are wider apart in females than in males.[34] In males, the acetabulum faces more laterally, while it faces more anteriorly in females. Consequently, when men walk the leg can move forwards and backwards in a single plane. In women, the leg must swing forward and inward, from where the pivoting head of the femur moves the leg back in another plane. This change in the angle of the femoral head gives the female gait its characteristic (i.e. swinging of hips).[35]

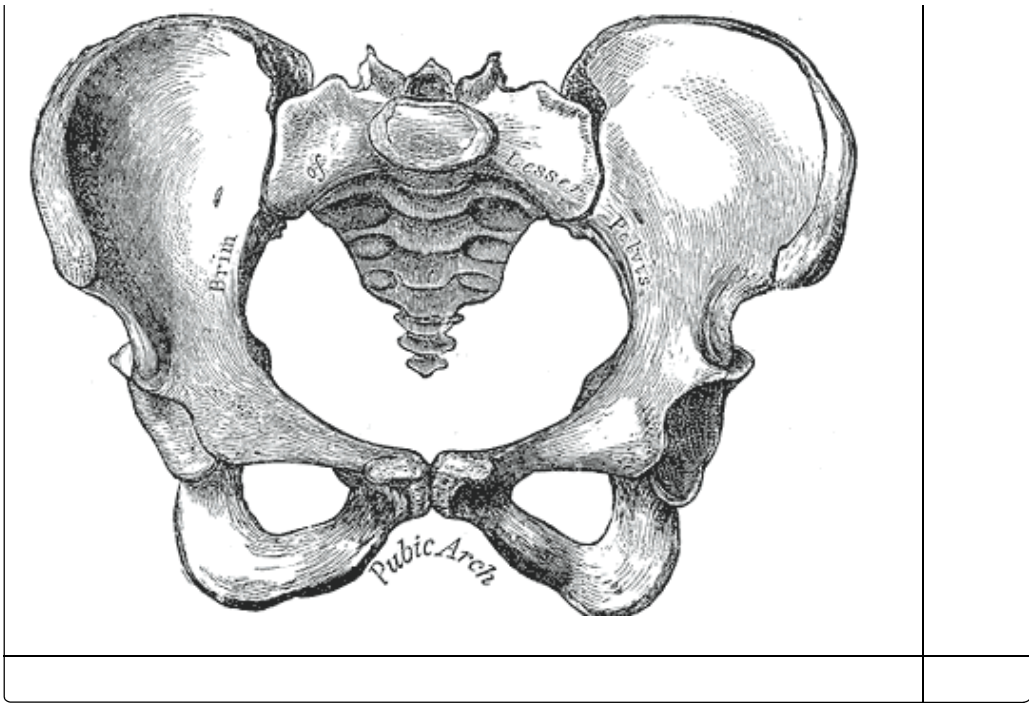




Male pelvis



Female pelvis



Ξενόγλωσσα

Αρχ. Ελληνικά πέλλα
οἱ δ' αἰεὶ περὶ νεκρὸν ὁμίλειον, ὡς ὅτε μυῖαι
σταθμῶ ἔνι βρομέωσι **περιγλαγέας κατὰ πέλλας**
ῶρη ἐν εἰαρινῇ, ὅτε τε γλάγος ἄγγεα δεύει:
ο μεταφραστής μεταφραζει καλδαρες.

Λατινικά pelvis < πέλλα δοχείο για το αρμεγμα.
Ιταλικά bacino , pelvi
Αγγλικά pelvis
Γαλλικά

Φράσεις

Παροιμίες

Παραδείγματα

Τεχνη

XXXXXXXXXXXXXXXXXXXXXXXXXXXXXXXXXXXX
Πεζογραφία:
XX
Ποίηση
XXXXXXXXXXXXXXXXXXXXXXXXXXXXXXXXXXXX

